

July 2019



**H  
O  
E  
D  
O  
W  
N**

**Board members 2019**

**President:** Nancy Glick, 541-330-6260, nnglick@bendcable.com

**Vice Pres:** JoAnne Abbott, 541-318-8297, jalabbott@hotmail.com  
 Kathy Geary, 541-588-2424, kathy.geary@aol.com

**Secretary:** Vickie Minor, 541-213-2329, geovick92@yahoo.com

**Treasurer:** Tim Schindele, 541-526-1940, TJSFishes@bendbroadband.com

**State Rep:** Gary Weber, 605-351-2096, gweber25@gmail.com

**Alt. State Rep:** Diana Hardin, 503-593-1398, dhardin2003@yahoo.com

**Historian:** Jan Even, 541-280-5238, even.jan@gmail.com

**Membership Coordinator:** Jolene Dodge, 541-771-7882, ajdodge@yahoo.com

**Communication Liaison:** Rocky Bessette, 541 548-0789, rockyb820@gmail.com

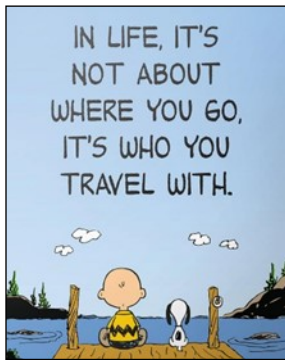
**Table of Contents**

<b>President's message</b>	<b>2</b>
<b>Agent's Corner</b>	<b>2</b>
<b>COMGA Calendar</b>	<b>3</b>
<b>Quarterly meeting minutes</b>	<b>3</b>
<b>Project Updates</b>	<b>4</b>
<b>Lowdown from the Board</b>	<b>6</b>
<b>Meet the Trainees</b>	<b>8</b>
<b>Getting to Know You</b>	<b>9</b>
<b>Judy's Gems</b>	<b>9</b>

## President's message



Community. Tribe. Clan. Culture. Family.  
We all belong, inadvertently or not, to some collection of human beings.



As a single working mom, I didn't have much other than my children and my old house until the day a neighbor I hadn't yet met arrived on my driveway with a grocery bag of freshly dug daylilies. He offered them to me, saying he had more than he could fit in his yard and asked "would you like them?"

I was such a poor gardener, I didn't recognize what they were. But, of course, I gratefully

accepted and quickly planted them in the yard. Little did I know how wonderfully they would grow, multiply and become a welcoming gift for the *next* new neighbor.

This story is part of my Portland history but after 20 years in Central Oregon and 14 in the Master Gardeners, I am always impressed by the generous spirit of this community of gardeners. I've been given seeds (Liz's *Lunaria*, JoAnne's Columbine, Nancy's *Rudbeckia*), seedlings (Shelby's lavender, Liz's *Iatris*), over-crowded perennials (Pat's Karl Foerster), houseplants (Dowann's philodendron) and bulbs (Shelby's *Chionodoxa*). My gardening neighbors have shared poppy seeds, rhubarb roots and their divided irises.

Community Gardens are the quintessential group of plant enthusiasts, sharing the up and the downsides of gardening. The veteran plot renters take the novices under their wings and delight in the successes of their students. And sometimes, even the most experienced of the gardeners learns a hard lesson that we all relate to and shed tears over.

As one of the Coordinators of the Bend community gardens, I also enjoy working with Master Gardener volunteers who bring a genuine love for the gardeners working together to make this garden community a mutually beneficial experience. The Hollinshead crew rest comfortably on almost 20 years' managing the garden and look fondly at Northwest Crossing's Community Garden as the place where new, fresh techniques are producing an exciting adventure for the volunteers.

With Gary Weber as NW Crossing's Community Garden Coordinator, promises many creative opportunities for the volunteers who want to see the real difference their hard work can make. If you'd like to join his crew, email him at [gweber25@gmail.com](mailto:gweber25@gmail.com) – I know he'd love to hear from you.

Nancy Glick



## Agent's Corner



Hi All,

Hope you are having a great summer so far. It seems that plants are growing quite slow this season, hopefully they will start to take off in the next few weeks. Make sure you are entering your hours in the volunteer hour reporting system. The new office building is about 60% complete and still on schedule to possibly move into in September. A couple of big thank yous.

Thanks to everyone that helped planting in the OSU Demonstration Garden a few weeks ago, it was a bit chaotic, but I appreciate you all being patient and getting the job done!

I want to send out a really big **THANK YOU** to all of you that have sent cards, congratulated me, and for the lovely gifts given to me at the promotion celebration party. All of this was totally unexpected but lovely! A thank you to Kris Knoernschild for hosting the celebration and to all that helped organize it. I really appreciate you all taking time out to celebrate this achievement with me, I couldn't do the work I do without my colleagues, staff and all of you that volunteer! YOU ALL INSPIRE me daily!

With much appreciation, Amy Jo



Kids in the Garden

## ***COMGA Calendar***

***for contact persons go to [gocomga.com](http://gocomga.com)***

### **July**

- 2 OSU Demo Garden workday, 9am
- 2 KPOV, 88.9 FM, 9-9:30am,
- 6 NWXCG class, Kids in the Garden, 9:30am
- 9 KPOV, 889 FM, 9-09:30am, Hot Weather Vegetables
- 11 Waterwise Education Garden workday, 9am
- 11 Board meeting, Liz Anderson's home, 5:00pm, potluck
- 13 Hollinshead class, Kids in the Garden, 10:00am
- 16 OSU Demo Garden work day, 9am
- 16 KPOV, 88.9 FM, 9-9:30am, High Desert Garden Tour
- 20 OSU High Desert Garden Tour
- 23 KPOV, 88.9 FM, 9-9:30am, Pollinators
- 24 Hollinshead class, Select & Maintain Water Wise Shrubs, 10:00am
- 25 Waterwise Education Garden workday, 9am
- 25 Hollinshead Community Garden meeting, 10:30am
- 30 KPOV, 88.9 FM, 9-9:30am, Powdery Mildew

### **August**

- 1 Board meeting, Rocky & Toni's home, 5:00pm
- 3 NWXCG, Open garden, 9:30am-12:00pm
- 6 OSU Demo Garden workday, 9:00am
- 6 KPOV, 88.9 FM, 9-9:30am, TBD
- 8 Waterwise Education Garden workday, 9:00am
- 13 KPOV, 88.9 FM, 9-9:30am, Tending Arborvitaes
- 17 Hollinshead Open Garden, 10:00am-2:00pm
- 20 OSU Demo Garden workday, 9:00am
- 20 KPOV, 88.9 FM, 9-9:30am, TBD
- 22 Waterwise Educational Garden workday, 9:00am
- 22 Hollinshead C G meeting, 10:30am
- 27 KPOV, 88.9 FM, 9-9:30am, TBD

### **September**

- 3 OSU Demo Garden workday, 9:00am
- 3 KPOV, 88.9 FM, 9-9:30am, Collect & Store Garden Seeds
- 5 Board meeting, Bend Library, Brooks room, 1:00pm.
- 7 OMGA board meeting
- 7 NWX community garden class, Get Ready For Fall, 9:30am
- 10 KPOV, 88.9 FM, 9-9:30am, Bulb Lasagna—What's Not For Dinner
- 12 Waterwise Education Garden workday, 9:00am
- 14 Hollinshead class, Get Ready For Fall, 10:00am
- 17 OSU Demo Garden workday, 9:00am
- 17 KPOV, 88.9 FM, 9-9:30am, TBD
- 24 KPOV, 88.9 FM, 9-9:30am, Propagating by Stem Cuttings
- 26 Waterwise Education Garden workday, 9:00am
- 26 Hollinshead Community garden meeting, 10:30am

**Newsletter Notes: Deadline for submission of material to the HoeDown is 1st Friday after the board meeting. All articles, notices and other journalistic efforts are welcome and appreciated.** All information provided by the "HoeDown" is believed to be accurate but readers must assume all responsibility for their own actions based on this information.

Occasionally a product or company may be named in an article but this does not necessarily constitute an endorsement of said product.

**Published by : COMGA** Send ideas & articles to:  
**HoeDown** Rocky Bessette, 8200 NW Yucca Ave., Redmond, OR 97756 or [rockyb820@gmail.com](mailto:rockyb820@gmail.com)

## **COMGA Quarterly Meeting**

June 29, 2019

Kathy Geary's Home – Bend

MEMBERS PRESENT: Nancy Glick (President), JoAnne Abbot (VP-Community Ed), Kathy Geary (VP-MG Education), Vickie Minor (Secretary), Jan Even (Historian), Gary Weber (OMGA State Representative), Rocky Bessette (Communications Liaison), Jolene Dodge (Membership Coordinator) Ruth Mulligan, Donna Brandon, Shirley Jaynes, Karen Finney, Chris Miao, Judy Shearer, Toni Stephan, Patricia Moreland; Guests present: Mike Mulligan and Ginger Cordoni. The meeting started at 2:00 PM and adjourned at 4:00 PM, with 18 people present, including two guests as noted above.

Nancy Glick thanked everyone for attending and gave a brief review of activities planned in the next several weeks, all of which are on the COMGA calendar. The High Desert Garden Tour is scheduled for July 20 in Madras and Culver. Information will be coming out soon about carpool vans for the event. Nancy also announced that there are three vacancies that need to be filled on the COMGA board: President, VP of Community Education and Historian. Volunteers are needed for a nominating committee. The next COMGA board meeting is July 11 at Liz Anderson's house in Powell Butte. Dinner is potluck at 5:30 PM, followed by the board meeting.

Nancy introduced Chris Miao and Ruth Mulligan, who led the rest of the meeting which was dedicated to reducing wildfire risks at home, and being ready to evacuate if needed. Several handouts were given out that contained the key points to reduce wildfire risks and what to do in an evacuation situation. E.g., How to Prepare Your Home for Wildfires, [www.firewise.org](http://www.firewise.org), Deschutes Alerts, [www.deschutes.org/911/alerts](http://www.deschutes.org/911/alerts), and Central Oregon Ready, Set, Go! Guide, [www.centraloregonfireservices.org](http://www.centraloregonfireservices.org). The group discussed the challenges faced in our area. Be ready to grab the five P's: people, pills, pets, photos and papers (important ones). Have a plan, know what to do when evacuation is ordered, what to do if everyone is not together at the time of evacuation and designate a place to meet.

Respectfully submitted,

Vickie Minor

Secretary



# Project updates

## Hollinshead Community Gardens By JoAnne Abbott

At Hollinshead Community Garden (HHCG) things are *finally* off and growing! It seems like it was a slow start this year, but people from the adjacent dog park are leaning over the fence wondering what crops are growing. Just yesterday a bystander told me that one of our gardeners gave him a handful of freshly picked radishes and they were absolutely delish! The cooler weather crops are doing the best right now; the radishes, peas, lettuces and broccoli are maturing quickly. It's important for our Mentors to stay on top of the ripening crops in their 9 patches, so we don't see gardeners letting the veggies go to seed. That would be a waste!

That segues directly into our annual 'Grow a Row' and our partnering with NeighborImpact for produce donations. We encourage our gardeners to either grow an extra row of vegetables or at a minimum, donating what they won't be using at home. NeighborImpact picks up produce directly at HHCG. Very convenient for all of the gardeners. Mary Ann Hart, Marilyn Friley and Evie Cox are our contacts for the HHCG food donation. In previous years we have donated between 1,200 and 1,400 pounds of vegetables per growing season. When you visit the garden, just inside the north garden gate, there are three raised beds. Two of the beds are planted with vegetables that will go directly to NeighborImpact. In one bed, lettuces and eggplants were donated from our COMGA plant sale and the other has Swiss chard and Romanesco broccoli plants donated from my garden plot. We sure hope these are prolific producers. The third bed is labeled our Pollinator Bed, which Susanna Harrison is overseeing, especially for her "Kids in the Garden" series.

As is our custom at HHCG, we select a gardener of the month during the growing season. June's winner is plot R, Helen Seidler and Jan Cigoy. Square foot gardening is their forte, and they do it well!

You must come by to see how the garden has transformed itself from raw soil to greenery beyond compare!



## Northwest Crossing Community Garden

by Gary Weber

With the onset of warm weather plant growth has really taken off at the garden. We see overjoyed gardeners harvesting a bounty of leafy greens and radishes. Unfortunately an untimely late frost the morning of June 28 nipped a few tomatoes and did-in many a bush bean and vining plant for the second time, but the replants are growing fast! Our rodent population seems to be at a low this year and damage has been minimal. We'll hope this continues.

The Gardening With Kids event held Saturday, July 6 was organized by MG Susanna Harrison with help from MG's Laurie Floyd, Cathy Coutin, Rosie Metcalf, Diane Cook and former volunteers McKenzie Jarvis, and Tina Burnside. Thanks for a fun program to get children involved with gardening.



Earlier this year one of the NWXCG gardeners donated their garden bed back to the Garden to be used for demonstration purposes. The first harvest of bok choy, little ceasar lettuce, and Russian red kale from the "demo bed" yielded 9 lbs. of produce that was donated to the NeighborImpact program with help from MG Mary Ann Hart.

We're looking forward to our next garden event, "Open Garden" on August 3<sup>rd</sup> from 09:30 until Noon. This will be an opportunity for gardeners to show off their veggies and exchange success and learning stories with their fellow gardeners. The event is open to the public, so we hope to see you there!

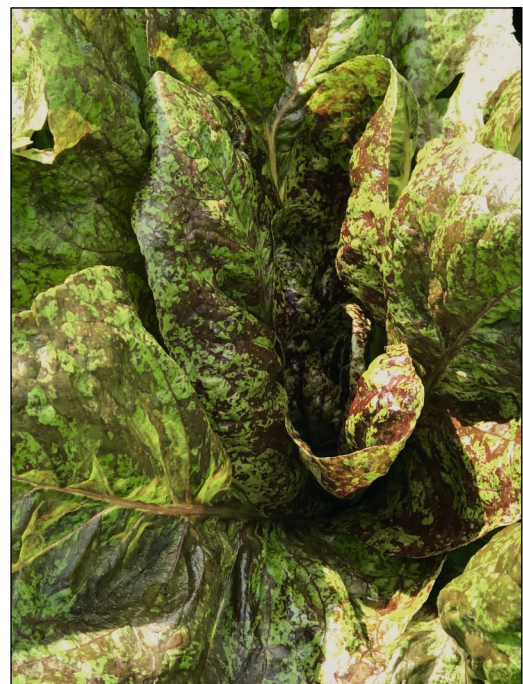


Photo by JoAnne Abbott

# Project updates

## Save the Date

COMGA ANNUAL BBQ

2019

Friday, August 16

Social Hour begins at 5pm

Dinner at 6pm

Generously hosted by

Jennifer Gold

Watch your inbox for details

Expect delicious food

Friendship

Annual Board Election

A bit of competition

And door prizes!

RSVP with a YAY or NAY to

[kathy.geary@aol.com](mailto:kathy.geary@aol.com)

Mark your calendar today for



## IT'S KPOV TIME GARDENING: GET GOOD AT IT

Tune in to The Point on KPOV 88.9 FM, every Tuesday between 9:00 and 9:30 AM.

Here is our lineup of upcoming Gardening: Get Good At It segments.

July 9 Hot Weather Vegetables

July 16 High Desert Garden Tour

July 23 Pollinators

July 30 Powdery Mildew

## OSU Extension Demo Garden

Thank you to all that came to our July 2nd OSU Extension Service Demonstration Garden workday in Redmond! We couldn't have got all the All American Selection annual beds completed without the help from all of the approximate 20 Master Gardener volunteers that day. Now it's watch the plants grow as we do a little weeding in between the new transplants and monitor the damage from the 3 cottontail resident bunnies and hope the Great Gray owl returns soon!



Join us next Tuesday, July 16th, if you can.

Vicky Kemp & Liz Douville



## Kids in the Garden, Hollinshead & NWXCG

On July 6th and July 13th, we all had fun promoting pollinators and providing, as one dad put it, "...education for the kiddos about gardening in Central Oregon". A couple of the kids came to both events because they had so much fun!

Volunteers: Tina Burnside, Diane Cook, Cathy Coutin, Laurie Floyd, McKenzie Jarvis, Susanna Harrison, Rosie Metcalf, and Leslie Walker.



All Kids in the Garden photos submitted by Susanna Harrison

## LOWDOWN FROM THE BOARD

**MEMBERS PRESENT:** Nancy Glick (President), Kathy Geary (VP-MG Education), Vickie Minor (Secretary), Tim Schindele (Treasurer), Jan Even (Historian), Gary Weber (OMGA State Representative), Diana Hardin (Alternate State Representative), Rocky Bessette (Communications Liaison), Jolene Dodge (Membership Coordinator), Elizabeth Hughes Weide, Janet Dart, Eileen Obermiller, Karen Finney, Marilyn Clark, Vicky Kemp, Liz Anderson and Beckie Moran.

The meeting started at 6:15 PM and adjourned at 8:28 PM. The board discussed the following items:

**Approval of minutes of previous meeting** (Nancy Glick)

Diana Hardin moved to approve the minutes; Kathy Geary seconded the motion; the minutes were approved.

**OSU Report** (Amy Jo Detweiler/Toni Stephan)

Shifts for the Garden Tour are now on Sling, through the "full schedule" option. 36 people are needed to work the event.

### BOARD REPORTS:

**Membership Report** (Jolene Dodge)

There is one new member. We discussed how to help people understand the role COMGA plays in providing funding support for most of the projects associated with the master gardener program, e.g., spring seminar, the community gardens and the community education projects. Jolene, Kathy Geary and Janet Dart will draft a letter to go to non-COMGA members in the fall.

**Treasurer's Report** (Tim Schindele)

Tim circulated the report before the meeting. We have \$36K in the checking account, and three CDs worth approximately \$18K total. We discussed how we use the funds and the need for us to maintain a balanced budget. Tim reported that \$26.88 was billed to the COMGA account number on the office printer but were not recorded on the paper log. Tim reminded everyone that the paper log is needed to reconcile the bills. After discussion, Tim will allocate the charge among the various projects. An email will be sent explaining the copier documentation and something will be included in the HoeDown. Tim also requested volunteers for the budget committee. The proposed budget will need to be formulated in time for the October meeting.

**OMGA Rep Report** (Gary Weber)

OMGA sent an email to all chapters asking for feedback about the future of mini-college. OMGA wants input on (1) the types of educational programs that should be included, (2) should the fees be increased so an event coordinator could be hired, and (3) where should mini-college be held. Since mini-college was canceled this year, OMGA has also asked chapters to contribute three gardening-related items to a mini-silent auction to be held at the November leadership forum and board meeting. Minimum value should be \$25 and the income would be used to generate funds for OMGA projects. We discussed

the questions and the things we already do to provide education to the community and the Master Gardeners. The consensus was that the chapters should be in charge of educating the public and OMGA should train the master gardeners to be trainers. Mini-college could be a "train the trainer" event, and include more tours and nationally known speakers. We also discussed the need for OMGA to create slide presentations and class programs that master gardeners could use to train the community. There is a need for OMGA to provide training for the chapter leadership on how to be better leaders, how to write letters, how to be a treasurer, etc. Tim reported that he will be hosting a meeting on August 26, 2019, for the chapter treasurers and so far, three have committed to attending. The meeting will be at the OSU Extension Office. If anyone has other feedback about mini-college, Gary needs it by July 20, 2019, so he can compile our chapter's response.

**Quarterly Meeting** (Kathy Geary)

The annual BBQ will be Friday August 16 at Jennifer Gold's house. 40 people attended in 2016, 52 people attended in 2017 and 31 people attended in 2018. Trainees are encouraged to attend and elections will be held. We discussed the voting process and the need to improve how this functions.

**Next Board Meeting** (Nancy Glick)

The next evening board meeting will be at Rocky's and Toni's in Redmond on August 1, 2019. Directions will come on the agenda.

### ACTION ITEMS:

**Trowel Awards** (Nancy Glick)

Seven nominations were made, two were awarded at this meeting to Vickie Minor for Spring Seminar and Liz Anderson for the Home and Garden Show. Awards for the Demo Garden, KPOV, the Plant Sale, HH Waterwise Garden and NWXCG will be presented by the project coordinators when they can meet with the recipients.

**Nomination Committee** (Nancy Glick)

Four positions are open: President, VP-Community Education, State Representative to OMGA and Historian. Kathy Geary, Janet Dart and Liz Anderson volunteered to be the nominating committee. If possible, nominations should be ready by August 4 so they can be published in the HoeDown. If necessary, an email can be sent to members after August 4 but before the BBQ, so people will know who is running.

**Open forum** (anyone)

The High Desert Garden Tour is July 20. Marilyn Clark and Beckie Moran have gardens on the tour and they talked about the amazing gardens attendees will see throughout Jefferson County. Janet Dart is driving one of the vans that will provide transportation to the tour.

**LOWDOWN FROM THE BOARD** continued on page 7

**LOWDOWN FROM THE BOARD** continued**PROJECT STATUS REPORTS:****Community Education** (Nancy Glick for JoAnne Abbott)

Susanna Harrison led the Kids in the Garden event at NWXCG, which will be repeated this Saturday at HHCG. The September education sessions will be about putting the gardens to bed for the winter. All other community education events have been completed.

**Hollinshead Vegetable Garden** (Nancy Glick)

Nancy reported that there is an issue with the soil in one of the beds at the garden. Amy Jo has been consulted and is working on the problem. A bio-assay test is being done to determine the scope of the problem. After initial discussion, Jan Even moved that COMGA allocate up to \$500 to be spent to resolve the soil problem at HHG, with additional funds to be requested if needed. The motion was seconded by Kathy Geary and discussion followed. Jan withdrew her motion, Tim Schindele moved to spend money for a soil test, not to exceed \$400, Jolene Dodge seconded the motion, which was passed. The funds would be taken from the discretionary account. Nancy will talk with Amy Jo to see what is needed and how we can help.

**NW Crossing Garden** (Gary Weber)

Gary reported that the hail last week did a small amount of damage but otherwise, the garden is doing well. Of the special allocation of \$1350 to do reinforcements of the beds and cloches, he spent \$980 to buy materials, he received \$548 from the gardeners and returned \$259 worth of materials that were unused. In the end, the total cost to COMGA was \$174. Gary also reported that unlike last year, NWXCG has been able to donate nine pounds of produce this year.

**OSU Demo Garden** (Vicky Kemp/Liz Douville)

The All America Selection has been planted, there has been some critter damage but replacement plants have been planted. Everyone was reminded that they need to work 3 hours in at the demo garden. Marilyn Clark reported that Amy Jo has said that work at COARC would count for the three hours.

**Waterwise Garden** (Chris Miao/Pat Kolling)

There was no report this month.

No other business was discussed and the meeting adjourned.

Respectfully submitted,

Vickie Minor, Secretary



We all appreciate the new Extension Office copiers' many talents including the code we now use to identify our usage. However, the code is for the Extension Office records, not for the Central Oregon Master Gardeners.

Please record your photocopy use on the clipboard on the wall by the door: the date, the project or event and your name help our Treasurer, Tim, identify where money was spent. If he cannot identify the correct project, we will have problems planning next year's budget.

I appreciate your help. Thank you.



Tina Burnside helping herself to a "wormy" lunch at the Kids in the Garden event

## Meet the Trainees

### Nathalie Smith

From across the table, Nathalie leaned toward me, smiling, her eyes alight. "You can save the world with GIS," she said.

I knew trainee Nathalie Smith had worked in in many aspects of Geographic Information System Mapping Technology, with a company known as Esri, but that was a pretty grand statement. "Save the world? With GIS? What exactly do you mean?"



"Everywhere we live and the things people do – everything occupies a position in space that is affected by a myriad of systems. Cities can use GIS to figure out where their assets are, like street signs, or manholes, and keep track of when they need replacement. Or Water and Electric utilities can tell you that a certain problem, like old pipes or wiring, is likely to affect you. They can plan upgrades based on real data like age of hardware or reports of problems.

"Wildlife management uses GIS. The Jane Goodall Foundation manages the location of chimps and the availability of territory for them. In the US, agencies use GIS to monitor the movements of elk, to figure out how to let them migrate and thereby sustain the population."

Clearly Nathalie is still inspired by the career from which she recently retired. No wonder! She was able to work with the Western Governor's Association to help them manage water resources, wildfire, endangered species, and even cheat grass.

And she worked behind the scenes for Esri's (Environmental Systems Research Institute) global annual conference. While helping out on the plenary session presentations over the years, she met many important modern pioneers and was able to learn about their strategies and accomplishments leveraging GIS. That's how she knows about Jane Goodall's work. And that of such people as Dr. Sylvia Earle, an oceanographer and marine scientist, called the "Cousteau of America" and Dr. Rita Colwell, an environmental microbiologist and the first female director of the National Science Foundation.

Another one of Nathalie's impressive encounters was with Dr. Wangari Maathai, the first African woman to win the Nobel Peace Prize for her contribution to sustainable development, democracy, and peace in Kenya. She founded the Greenbelt movement, working with women in villages to replant trees and shrubs where there had been severe deforestation, which led to soil and waterway erosion. Now the increased vegetation recuperates the environment so that water holes are fuller and women

don't have to walk as far to get water. Not having to spend hours each day to obtain water makes a vast improvement in their lives.

Nathalie is a scientist at heart. She studied geography at UCLA and also loved history in school. She really appreciated the classes she took in Master Gardener training and wishes there had been more. Among other activities, she volunteered for OSU Extension Agronomist Clare Sullivan's project to determine whether raspberry and strawberry crops would work for small farmers in the Alfalfa area.

If we are lucky, she may apply her GIS expertise to helping COMGA develop a Storymap of the Hollinshead Water Wise garden. If you want to know what that might be, here's a URL: <https://www.esri.com/en-us/arcgis/products/arcgis-storymaps/overview>

Talking with Nathalie made me more aware of the many innovative ways in which people really are trying to save the world. She herself is involved in several crusades. She's a canine companion for the Humane Society. She is gradually restoring the disturbed landscape in the property she owns near Horse Butte into a relatively native-plant environment. And we may see some interesting developments in COMGA programing as well. Stay tuned.





## Getting to Know You!

By Carolyn Tate

Although she often stays "In the Shade" or behind the scenes, Rocky Bessette is a mainstay of the COMGA. So let's find out what makes Rocky the kind and knowledgeable person she is.



Rocky moved with her family from New Bedford, Massachusetts to Anaheim, California when she was 14. In the warm climate she got involved in all manner of high school sports. Horses were a major interest too. She started college but lack of funds forced her to take a job.

Having earned a little money, at age 19, she bought a horse, Rex, a Morgan. These are compact horses with great stamina and agility. She taught herself by starting with trail riding. Once she got comfortable she decided to enter gymkhana shows with Rex. Gymkhana involves racing through a variety of courses, such as pole bending, barrel bending, and keyhole, all without touching any of the obstacles. The speedy team won quite a lot of high point trophies.

After a few years, Rocky returned to college. Although she had to sell Rex, her passion for sports blossomed into a degree in Physical Education from Cal State Long Beach. Then she accepted a job teaching PE in Garden Grove CA. She bought a house on a half-acre and a quarter horse and did a lot of trail riding along the river in Mira Loma, a horsey community.

"High school kids know everything so you have to be tricky to teach them something," she says. And she had to learn to be creative in organizing and managing 70 kids on a half-acre. She coached freshman volleyball, softball, badminton, and varsity softball. Basically, she loved coaching because the students actually liked being there; it wasn't a compulsory class.

As retirement beckoned, she and her partner bought a 120-acre property in Central Oregon, near some family. Six years later, they arrived. "Finally, I could be a cowboy," Rocky said, her eyes twinkling.

For years they had eight horses and used to ride a lot. She also had a big garden where she grew vegetables – "things I didn't have to cook" – and Minnesota midget cantaloupe. She already had expertise, having grown food in California, but there, she points out, the growing season starts in February.

When she arrived in C.O., she entered the Master Gardener program. She has been a mainstay Master Gardener for years, three times winning the "In the Shade" award for over-the-top "behind the scenes" service, and one state-wide award. In 2018 Rocky was awarded a 20-year certificate.

Now she is the Communications Liaison for the *HoeDown*. This involves collecting all the articles and information from coordinators and doing the lay out. If

there's not enough material, she searches for interesting articles. She is always looking for new pieces, so if you have an idea, definitely contact her.

And she is in charge of Spring Gardening Seminar, which has flourished under her care. The 2018 Spring Gardening seminar was a big success, with 249 attendees, many of whom were taking multiple classes, and generated high approval ratings. And if you need row cover or COMGA apparel, Rocky is the one to see.

These days, Rocky doesn't ride much. Her two horses enjoy the acreage. Instead she works on the ranch. They grow hay for sale, irrigating, mowing, raking, baling, and stowing it in the barn.

To avoid rest, she volunteers on the Oregon Bee Atlas program, a five-year project. She and other volunteers "boldly go where no amateur melittologist has gone before" to capture bees for identification. They are steadily adding to the previously-known 500 species of native bees in the state. The new digitized records will be added to historic records from The Oregon State Arthropod Collection to build the first comprehensive account of native bee fauna of Oregon.

Her approach is to take one day at a time and to enjoy her good health. Her coaching approach works well with the unruly crew of Master Gardeners. She can still be creative and can work with people who want to be there, taking care of their world.

## Dwarf Monkey Flower

A high desert gem  
by Judy Shearer

As my daughter and I headed east of Bend toward the Badlands along Rickard Road, the high desert became awash with color in mid June. One of the most striking flowers was the native dwarf purple monkey flower (*Diplacus nanus*) formerly (*Mimulus nanus*). It formed carpets of magenta colored flowers intermixed with other species (see photo). I am only surmising that this year produced this spectacular display following the abundant moisture that became available this past winter and spring. This diminutive annual barely five inches tall, at most, has five lobed flowers (two upper ones and three lower) with dark red and yellow markings on the tubular throat providing a landing platform for the pollinators. The slightly hairy leaves are oval with purplish undersides. It prefers dry sandy sites and is more common east of the Cascades.

Ronald Taylor. 2014. Sagebrush Country A Wildflower Sanctuary. Mountain Press, Missoula MT.

Calflora (accessed 6/26/19)

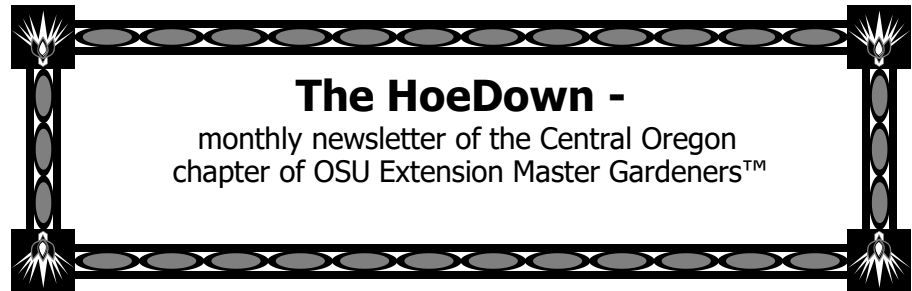
Photo Credits: Samantha Shearer



Central Oregon Chapter of OSU Extension Master Gardeners™  
3800 SW Airport Way Bldg.#4  
Redmond, OR 97756



Crook  
Deschutes &  
Jefferson Counties



“Oregon State University Extension Service offers educational programs, activities, and materials without discrimination based on age, color, disability, gender identity or expression, genetic information, marital status, national origin, race, religion, sex, sexual orientation, or veteran’s status. Oregon State University Extension Service is an Equal Opportunity Employer.”

