

H O E D O W N



June 2018



Board members 2018

President: Nancy Glick, 541-330-6260, nglick@bendcable.com

Vice Pres: Tina Burnside, 541-318-0426, tinaburnside@bendcable.com/
JoAnne Abbott, 541-318-8297, jalabbott@hotmail.com

Secretary: Shirley Jaynes, 541-410-1736, ksj1986@outlook.com

Treasurer: Tim Schindele, 541-526-1940, TJSFishes@bendbroadband.com

State Rep: Vickie Minor, 541-213-2329, geovick92@yahoo.com

Alt. State Rep: Jeanine Johnson, 541-419-7734, jkjohnson@bendcable.com

Historian: Jan Even, 541-280-5238, even.jan@gmail.com

Membership Coordinator:

Joy Burns, 541-550-6688, 2joy.burns@gmail.com

Parliamentarian: Jolene Dodge, 541-771-7882, ajdodge@yahoo.com

Communication Liaison: Rocky Bessette, 541 548-0789, rockyb820@gmail.com

Table of Contents

President's message	2
Who Am I?	3
COMGA Calendar	3
Project Updates	4-6
Board meeting minutes	7
Meet the Trainees	7
Photos	8
OMGA Board report	9

President's message



What *is* this thing called Mini-College? What's all this talk about classes, carpools, room sharing, bus tours?

Well. First off, it's the Conference Formerly Known as "Mini-College", freshly renamed the "Growing Gardeners Conference". It's two garden-packed days of classes, books, Master Gardener themed products and meals spent sharing tips, techniques and personal stories about plant problems, Plant Clinic and compost.

I've always found that the classes offered are wildly creative and the instructors incredibly talented. In past years I learned that my generously labelled "lawn" of fescue, yarrow and daisies is not a weedy mess, it's an Eco-lawn and friendly to the planet! I've been shown that succulents are perfect for the lazy gardener like me since I don't need to do much but keep them from freezing. And I'm now the proud owner of an official OSU rain gauge after taking a class to learn about the citizen science of collecting data for the weather service.



This year's classes are no different: our own Amy Jo Detweiler will be teaching us how to evaluate our Master Gardener projects, which is so vital to our success but often overlooked, I'm afraid. The wonderful and always thought-provoking Gail Langellotto (the OSU Master Gardener Statewide Coordinator) will tell us about her research project, "Garden Bees of Western Oregon".

I'm curious about classes with names like "Avoiding the Green Meatball", "Oddball Problems", "Gardening Outside the Box" "Current & Future Pests" "Don't Touch or Taste that Plant" and "How to Start a Youth Program" (the full titles are longer and you can see them in the online class schedule <https://omga.org/wp-content/uploads/2018/05/Speaker-schedule-2018-1.pdf>).



Central Oregon's Jeanine Johnson is an OMGA Board Vice President and has been working hard for a year to make the program exceptional – and has she ever! The schedule has been broken into categories that explain it all : 1)

Associations That Rock, 2) Growing MG's, 3) Garden Pizzazz, 4) Garden Marauders, 5) Eclectic Elements, 6) Oh, What Fun!!, 7) Mix of All Topics. The class titles are just a savory taste – click on the class descriptions to get the full meal deal: <https://omga.org/g2-class-descriptions-and-schedule/>.

Did I mention tours? The first one is Friday, going to The North Willamette Research and Extension Center (NWREC), a 160-acre farm where they combine OSU's research and Extension outreach to serve the region's

agriculture. If you've never visited the Oregon Garden, this is your chance. After a short bus ride to Silverton, the 80-acre garden will be toured Friday afternoon with a 30-minute session on demonstration gardens. The \$29 fee covers the cost of the bus and the entrance fee.

And if you LOVE visiting nurseries, Saturday's tour was created with you in mind – you can visit the Monrovia Nursery. They supply 5,000 U.S. garden centers with approximately 22 million plants in over 2,000 varieties – you know their name. The tour is limited to just 20 so sign up soon.

Once you've listened, shared, toured and shopped (be sure to visit the bookstore), you'll be ready for lunch in the really-quite-good cafeteria or a summer evening banquet dinner on the lawn. The Friday night awards dinner recognizes some incredible Master Gardeners from all over Oregon.

The best news of all is that the Central Oregon OMGA Chapter has some funds in the budget to help anyone who might need a bit of financial support to attend the Conference. Go to the Forms page on our website to find a financial assistance form (www.gocomga.com/forms - password gr8gardens). On the Members-page (www.gocomga.com/members-page), we'll be collecting names of those who want to share a ride and/or a room with a friend.

So much to learn and enjoy in McMinnville on July 12, 13 & 14 - be sure to check out all the possibilities and register right away. We'll be seeing you there!



After you register, check with Diana Hardin (dhardin2003@yahoo.com) to get your orange hat for the Conference.



Newsletter Notes: Deadline for submission of material to the HoeDown is 1st Friday after the board meeting. All articles, notices and other journalistic efforts are welcome and appreciated.

All information provided by the "HoeDown" is believed to be accurate but readers must assume all responsibility for their own actions based on this information. Occasionally a product or company may be named in an article but this does not necessarily constitute an endorsement of said product.

Published by : COMGA Send ideas & articles to: **HoeDown** Rocky Bessette, 8200 NW Yucca Ave., Redmond, OR 97756 or rockyb820@gmail.com

COMGA Calendar

for contact persons go to gocomga.com

June

- 2 Plant Sale & Demonstrations
- 5 KPOV, 88.9 FM, 9-9:30am, Hypertufa
- 5 OSU Demo Garden workday, 9am
- 7 Board meeting, 5:30pm. Peggy Ashford's home, potluck
- 9 Hollinshead, Growing Tomatoes, 10-:30am
- 12 Hollinshead Garden workday, 9am
- 12 KPOV, 88.9 FM, 9-9:30am, Bacteria, Viruses & Nematodes
- 12 Hollinshead, Irrigation & Water Wise Gardening, 4:30pm (tentative)
- 16 NWXCG, Gardening With Kids, 9:30am
- 19 KPOV, 88.9 FM, 9-9:30am, Edible Gardens
- 19 OSU Demo Garden workday, 9am
- 26 Hollinshead Gang meeting, 9am
- 26 KPOV, 88.9 FM, 9-9:30am, Questions in Plant Clinic This Month
- 30 NWXCG, Pollinators, 9:30am

July

- 3 OSU Demo Garden workday, 9am
- 3 KPOV, 88.9 FM, 9-9:30am, Heirloom Gardens
- 7 NW Crossing class, Growing Garlic, 11am
- 7 General meeting, Grow a Little Fruit Tree
- 10 Hollinshead Water Wise Garden workday, 9am
- 10 KPOV, 88.9 FM, 9-9:30am, Insect Management in the Organic Garden
- 10 Board meeting, 5:30pm, Jan Even's home, potluck
- 12 OMGA Growing Gardeners Conference, Linfield College
- 13 OMGA Growing Gardeners Conference, Linfield College
- 14 OMGA Growing Gardeners Conference, Linfield College
- 14 Insect Management in Organic Gardens, Hollinshead Park, 10:30am
- 17 OSU Demo Garden workday, 9am
- 17 KPOV, 88.9 FM, 9-9:30am, OSU High Desert Garden Tour
- 21 OSU 25th Annual High Desert Garden Tour, 9-3:30
- 24 Hollinshead Community Garden workday & meeting, 9am
- 24 KPOV, 88.9 FM, 9-9:30am, Gardening on the Cheap
- 31 KPOV, 88.9 FM, 9-9:30am, Questions in Plant Clinic

August

- 1 Deschutes County Fair starts, 10am
- 2 Board meeting, HH Waterwise Garden, 5:30pm, potluck
- 3 OMGA Executive Committee meeting, 10am
- 4 NWX Community Garden, open garden, 9:30am
- 7 OSU Demo Garden workday, 9am
- 7 KPOV, 88.9 FM, 9-9:30am, TBD
- 8 Crook County Fair starts, 5pm
- 14 HH Waterwise Garden workday, 9am
- 14 KPOV, 88.9 FM, 9-9:30am, Open Garden HH
- 14 HH Community Garden meeting, 10am
- 18 HH Community Garden Open Garden, 9am
- 21 OSU Demo Garden workday, 9am
- 21 KPOV, 88.9 FM, 9-9:30am, What Plant Tags Tell Us

- 28 HH Community Garden workday, 9am
- 28 KPOV, 88.9 FM, 9-9:30am, Questions in Plant Clinic



Who Am I?

Here are 10 things you may not know about me:

1. Before becoming a Master Gardener, I was a community gardener in Bend.
2. As a teen, I was an in-school educator for the State of California on aviation and the basics of flight
3. My favorite garden vegetable to grow is heirloom tomatoes
4. I commuted 320 miles round-trip for 6 years via car and train
5. My spouse and I have 4 children and 4 grandchildren
6. Las Vegas is my unofficial home away from home; having spent 30 days a year on average there for business trade shows
7. The City of Santa Clara, California, named a day after me for community service
8. Genealogy is a hobby. My ancestors arrived in the Colonies around 1607. Other ancestors were first to settle at modern-day Roswell, New Mexico (way before the aliens arrived).
9. My favorite country to visit outside of the US is South Korea - Annyeong-haseyo! Did you know that road sign colors (such as brown for parks) are the same in both countries?
10. My spouse and I met online, though it was before the internet and world wide
Think you know who this Month's Mystery Master Gardener is?
Email Joy Burns at 2joy.burns@gmail.com
Based on the timestamp of all emails submitted, whoever submits the correct answer first wins the contest. Prize to be determined.

May's

Who Am I? was

Peggy Ashford



Project updates

Hi Everyone,

Hope everyone is enjoying their gardens as we head into summer. As you may all have encountered, the OSU Extension Service has migrated their website. My hope is that we have our local website dialed in the next few months, we (locally) are not in charge of the time line on this release so we are having to make due and it will take some time to get pages loaded so thank you for your patience.

We are able to load upcoming events and classes found here: <https://extension.oregonstate.edu/deschutes/2018-garden-classes>

Upcoming events include the High Desert Garden Tour in Bend on July 21st. We will send out a request to sign up for a shift soon.

Please let me know if you have any questions about your volunteer time as you go. Thank you for volunteering your time as a Master Gardener, you are doing great work!

Enjoy the gardening season! Amy Jo

OSU Extension Demo Garden by Liz Douville

There are seedlings in desperate need of getting out of the hot greenhouse and into the All American Selection annual beds. There will be an "Add-on" workday to do some transplanting and also direct seed sowing on:

June 13, 2018, Wednesday starting at 8:30 am

If you are available to come help and join in the fun, bring a kneeling pad, hand trowel, drinking water and sunscreen.

Thank you in advance for volunteering your time and energy!

Vicky Kemp & Liz Douville, OSU Demonstration Garden Project Coordinators

IT'S KPOV TIME GARDENING: GET GOOD AT IT

Tune in to The Point on KPOV 88.9 FM, every Tuesday between 9:00 and 9:30 AM.

Here is our lineup of upcoming Gardening: Get Good At It segments.

June 5 Hypertufa

June 12 Bacteria, Viruses & Nematodes

June 19 Edible Gardens

June 26 Questions in Plant Clinic

COMGA PLANT SALE

Another successful year for the COMGA Plant Sale on June 2nd, from 9 am to noon. The waiting line started forming about 8:15 am and by 9:00 am there were 79 potential customers lined up when the sale opened. By 9:45 am, 300 customers had passed through the line and by noon, there were 525 customers attending our event.

After purchasing COMGA plants many customers stopped by the booths set up near the cashiers to see and discuss issues about Insect ID and Integrated Pest Management, Mobile Plant Clinic, Iris and Tomato Transplanting Demonstration, OSU Master Food Preservers and our book sale table. Many customers also took a self-guided tour through our OSU Demonstration Garden taking pictures of the landscape plants including the plant labeling for their ID purposes.

Here's the figures you've been waiting for:
Total Gross Income was \$ 5,526

This includes:

\$ 4259	3-4" potted plants (1419)
\$ 715	irises (143 x \$5)
\$ 110	row cover (11 x \$10)
\$ 160	soil thermometers (32 x \$5)
\$ 250	Vendor fees (10 x \$25)
\$ 32	book sales

Expenses:

\$ 103	seeds
\$ 48	seed germination mix
\$ 211	potting soil
\$ 400	OSU greenhouse utilities
\$ 188	Ads and postcards
\$ 91	miscellaneous items

Lots of volunteer work!!!

Net Income of \$4,485

We donated (102) unsold plants, many of which were very small, to these organizations or individual: Sisters Community Garden (23), Environmental Learning Center (49), Deschutes Co. Extension Service, Katie Ahern, Family Community Health/SNAP-Ed (27) and (3) to a person with Down's Syndrome.

Thank you everyone that volunteered working in the greenhouse, growing and potting up irises, sorting and pricing books, teaching and assisting classes for seed starting in April and for seedling transplanting in May and of course volunteering for the COMGA Plant Sale Day!

Vicky Kemp, Plant Sale Project Coordinator

Project updates

Hollinshead Vegetable Garden

by JoAnne Abbott

It's June already and Hollinshead Vegetable Garden (HVG) is moving and shaking! Our plots are all rented for the year and most of them are showing results from hard opening day work. Plot owners have until June 15 to show work in their gardens, otherwise they forfeit the return of their rental fees, but we also will ask if there is something we can help them with to get them started on their gardening venture. As you all know, our season is short, so we don't want to waste any time getting started planting!

We began the season with our first annual lottery. We had approximately 42 people who applied for the lottery, and 13 were chosen to fill the vacated plots from 2017. We have 29 people on our wait list, which in the past, a few more have been called forward to take over a plot, for various and sundry reasons. From the Master Gardener perspective, people appeared happier having a lottery system, rather than getting up extra early and standing in line at 5:45 a.m.

In reality, it was only six weeks ago when we "woke up" Hollinshead Vegetable Garden for the season. And today, there is so much growth: Vegetables, flowers, and our annual insurgence of *W-E-E-D-S!* I hate to say it, but the purslane is starting...it's easier to pull it now, than to wait until it's mature and ready to bloom! I believe we're seeing the evidence of the ever present flea beetle too...

Nancy Crosson and I have planted two of the raised demonstration beds with different types of squash seed. The demonstration is about powdery mildew. Will we find powdery mildew on the leaves of the seeds that are indicated with disease resistance to powdery mildew, versus the leaves of seeds that have no mention of resistance? (Remember, HVG has overhead watering). When you visit HVG, the most southern raised bed has disease resistant All American Selection seeds, donated by Amy Jo. The most northern raised bed has seeds from a local low-cost store. A few of the squash are already peeking through the soil, so take a look when you are in the garden. We'll give a final report in September.

We are more than happy to have our Garden Mentors and Garden Assistants join us this year. Please give a round of applause to the following for volunteering their time at HVG!

Mentors: Evie C., Cathy C., Richard B., Jennifer G., Kathy K., Anne P., Mary Ann H., Patty A., Jeff O., Sheila D.

Assistants: Penny P., Susanna K., Kat K., Patsy K., Kate A., Kris W.

And, to round out the bunch: HVG Coordinators: Nancy Crosson and Jeff Orr

Thank you all for your time and effort. Just peering over the garden, you can tell our volunteers are enjoying their jobs!



GROWING GARDENERS 2018

Are you going to the Growing Gardeners Conference (formerly Mini-College)? Do you wish you could but money is tight right now?

COMGA to the rescue!

The Central Oregon Master Gardener Association Chapter has **scholarship funds available for veteran and trainee Master Gardeners** to attend this year's Conference at Linfield College in McMinnville July 12, 13 & 14.

For more information about the classes and programs being offered, go to <https://omga.org/growing-gardeners-formerly-mini-college/> and register (print the receipt of your payment). Then go to www.comga.com click on the COMGA Members button and enter the password (gr8gardens). You'll find the G2 Conference Financial Assistance application in the Forms tab on the orange bar. The deadline to apply for assistance is June 24th, so hurry and send in your registration and your scholarship form soon.

If you're hoping to share a ride to McMinnville or a room when you get there, go to the COMGA website (www.gocomga.com/members-page) and enter your information before June 24th. You'll be notified when we have made connections for sharing.

If you have any questions, contact Tim Schindele at TJSFishes@bendbroadband.com or [541-526-1940](tel:541-526-1940).

If you lived in the desert,
which would you rather have—
an oil well or a garden?
In certain parts of Saudi Arabia,
a gallon of gasoline costs 41¢
and a watermelon costs \$21



Project updates

Board Meeting at Peggy's house



COBA Home & Garden Show

The 2018 COBA Home and Garden Show was a great event for the Central Oregon OSU Extension Service Master Gardener™ mobile plant clinic. We had 733 contacts over the weekend and 131 people attended our classes, keeping 18 veterans/trainees and 5 instructors extremely busy for the three days of the show.

The volunteers at the mobile plant clinic booth did a great job getting out and talking to people about gardening in Central Oregon. They actively used the tablets to look up weeds and various other gardening questions. We gave out hundreds of bookmarks and copies of the Central Oregon Climate handout. We gave out all the copies we had of the deer resistant plant list and the Garden Classes calendar. We also ran out of the fliers on how to become a master gardener, which we viewed as a very positive development! As always, vegetable gardening information was popular with the Vegetable Gardening in Central Oregon booklet and the vegetable gardening calendar being in high demand. We also handed out Waterwise Gardening booklets and many people remarked that it was extremely helpful because of the symbols that identified key elements: deer resistant and fire resistant plants, those that are natives and which plants would attract pollinators, butterflies and birds. This year, we also had OSU Beaver stickers on the table, which were a huge hit. We invited people to take a sticker in exchange for a gardening question, which ended up being a lot of fun and got many people to ask questions that they would otherwise not have asked.

We offered six classes that were well attended: Best Vegetables for Central Oregon (offered Friday and Saturday and with Jan Even and Vicky Kemp), Growing Tomatoes (JoAnne Abbott), How to Garden for Life (Pat Kolling), Waterwise Gardening (Jan Even), and It's Not Just About Honey Bees – a talk on Native Bees (Toni Stephan). We did a KPOV session to highlight the weekend, the class schedule was published in the COBA guide, there was a poster near the classroom and the COBA people made announcements about each class. As a result, 131 people attended our sessions.

Overall, we had a very successful weekend with our classes and a big thanks goes to all our instructors (Jan, JoAnne, Pat, Toni, & Vicky) and the volunteers (Kris W., Donna K., Mimi T., Caroline T., Ruth M., Kathryn K., Evelyn J., Victoria B., Jan B., Eileen O., Margaret M., Angie B., Randy H., Liz A., Elizabeth W., Leslie W., and Caroline S.) who answered dozens of questions from our visitors and/or helped in the classroom as teaching assistants.



Central Oregon Master Gardener Association Board meeting June 7, 2018

Meeting was called to order by President Nancy Glick at 6:30 pm

A motion to accept the minutes as written was made by Jan Even and seconded by Rocky Bessette. The motion passed.

OSU Report: Toni Stephan reported our new OSU website is up. A folder of our C. O. publications, created by Kat Kendall, is on the desktop. The Garden Tour is July 21st in Bend. There will be 6 gardens and volunteers are needed for the project. E-mails will follow asking for volunteers.

Board Reports: Tim Schindele presented the treasurer's report for May 2018. We had a discussion on what to do with the 24 month C D that will be maturing soon. Vickie Minor proposed we put the \$5,438.96 C D in Interstate Bank with a 37 month C D. Nancy Glick seconded it. We voted and it passed. We also discussed what funds to spend next year. The budget committee will take this issue up.

Treasurers Report: Tim Schindele
Total Income for May 2018 \$4,401.81
Total Expenses for May 2018 \$1,145.02
Checking Account Balance May 2018: \$36,484.76
PayPal Balance: \$ 0.00
Savings Account Balance: NW Community CU: \$25.83
60 Month CD Matures 1/5/2023 \$6,995.55
24 Month CD Matures 6/19/2018 \$5,438.96
Committed Funds as of 5/31/18
Checking account Cash Flow: \$5,000.
Opportunity Fund Balance: \$5,000.
Reserves: \$5,000.
Total Assets: \$48,945.10

OMGA Report-- Vickie Minor reported on the OMGA 2nd Quarter Leadership Forum and Board Meeting in Roseburg and Sutherlin on June 1-2 2018. The group discussed demonstration gardens and the challenge of getting enough volunteers to maintain the gardens. OMGA 2nd Quarter Board Meeting --Sue Nesbitt reported that the PNW handbooks have been purchased and distributed to the chapters. Gail Langellotto talked about the changes coming to the OSU Extension website. The process of planning and holding the annual conference was discussed with the possibility of a regional approach. The Home and Garden Show was a great success. They had 733 contacts and 131 people attended classes.

Next Board Meeting—will be July 10 (Tuesday) at 5:30pm at Jan Even's home in Redmond, pot luck dinner. There was discussion on the next quarterly meeting. An e-mail will be sent out asking for responses about driving to 2-3 houses to earn advanced credit and learn about creating "Little Fruit Trees".

Membership Report—Joy Burns turned in a report. There are 74 total paid members to date.

Trowel Award—Nancy Glick gave out a copy of Who's a Great Volunteer form.

Project Status Report:

OSU Demonstration Garden—Vicky Kemp reported next Wednesday the All American planting will be done. Volunteers are needed.

Hollinshead Garden—JoAnne Abbott reported all plots are rented. They have 2 experimental demonstration beds of squash. One with a mildew resistant type the other with regular squash. Kat Kendall started a straw bale garden. She will do signs to explain the procedure.

KPOV Podcast—Nancy Glick reported there will be a podcast of our radio shows available on the KPOV.org site.

NW Crossing Garden—Tina Burnside reported a good opening day. Not all beds are rented. They will do demonstration beds in the empty areas.

Plant Sale—Vicky Kemp reported the 9am-12pm time frame for the sale worked well. The customer count was 525. Overall it was a great success and worked well with the vendors. Vicky noticed people taking pictures of the plants and description signs in the garden. This makes for an additional educational experience for our customers at the sale.

The meeting was adjourned at 8:11pm by Nancy Glick

Thank you

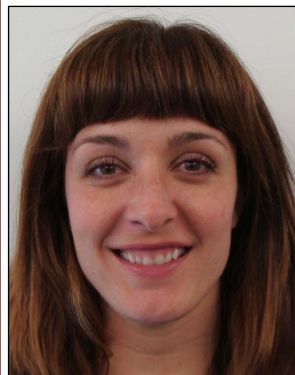
Respectfully submitted,

Shirley Jaynes, 2018 COMGA Secretary

Meet the Trainees

by Jolene Dodge

Kathryn Kendall "Kat"



Kathryn joins us from California via Maui, she wants to learn how to successfully garden in the unique Central Oregon climate and also be a good resource for gardening knowledge in the community. She is excited to meet like minded people who share her enthusiasm for beautiful landscapes, water wise design, home-grown fruits and vegetables, and respect for the natural world we live in.

Kathryn likes Zentangle (mindfulness-through-drawing), working in her greenhouse, cooking, and visiting playgrounds with her young daughter Marigold.

She really enjoys squash sex. She is experimenting with vertical squash gardening in her greenhouse which requires her to assist them with successfully producing fruit by bringing the male flowers to the female flowers.



The group gets instructions from Vicky before transplanting seedlings for the Plant Sale



Patti just can't stop reading those garden books



Jeff is making sure everything is running smoothly



Plant Clinic orientation was a blast, right Scott

Is Nancy giving instructions or leading a group exercise



Report on OMGA 2nd Quarter Leadership Forum and Board Meeting

Douglas County (Roseburg and Sutherlin)

June 1-2, 2018

Leadership Forum: The group discussed the results of a survey sent in February, on the following questions: (1) do we have a demonstration garden; (2) are there issues getting enough volunteer time to maintain and staff the garden; (3) do we find it easy to introduce and involve new Master Gardener trainees in these activities; and (4) do we get sufficient exposure to the community served. Most chapters have demonstration gardens but the consensus seemed to be that everyone had challenges getting enough volunteers to maintain the gardens. There was also agreement that more could be done to make the public aware of the gardens and the resources the master gardeners provide in the community. Signage was a key topic. Some chapters are installing more signs; others have started using "QR" codes on the signs to provide information that is more extensive. Several chapters have pursued grants and community donations for this purpose, and have installed donor boards to acknowledge the public contributions. The group also discussed the challenges in keeping new trainees involved and motivated so they recertify in subsequent years. Most counties use some variation of a mentor structure, but everyone agreed that more could be done.

OMGA 2nd Quarter Board Meeting: Sue Nesbitt reported that the PNW handbooks have been purchased and distributed to the chapters. OMGA is working on updating the history of the master gardener program and asked that if chapters have official minutes, agendas and quarterly reports from 2010 – 2017, that they consider donating them to the project. OMGA is also beginning work on updating the OMGA Representatives Handbook. The G2 conference (formerly mini-college) will be July 13-14, 2018 at Linfield College in McMinnville. Costs and information are posted on the OMGA website: <https://omga.org/growing-gardeners-formerly-mini-college/>. Gail Langellotto talked about the changes coming to the OSU Extension website, and noted that the volunteer hours reporting system is being transferred to a secure server. In the near future, the annual conditions of volunteer service form will be available online. Gail discussed the MG badges and the need to bring them into compliance with the new OSU logo. She has been in touch with two companies to get estimates on updating the badges. Finally, Gail reported on the project to help make the master gardener program more interactive, accessible and fun. The working group has come up with three recommendations: (1) move to more active learning styles, and not just three hours of lecture in class; (2) find a way to lower the cost of taking the training; and (3) make the hours requirement for new master gardeners consistent across the state, at 60 hours. The working group expects to finalize the recommendations before the end of the year, hopefully in time for the 2019 class of trainees.

The process for planning and holding the annual conference (G2, formerly mini-college) was discussed. A key goal is to make the conference more open and attractive to non-master gardeners. The proposed concept is to move away from having the conference in

the same location, to adopting a regional approach. Chapters would be assigned to a region, the conference would rotate around the regions and each host region would be responsible for all the planning and hosting of the conference. Sue Nesbitt asked the chapters to discuss possible changes and provide feedback in time for the September board meeting.

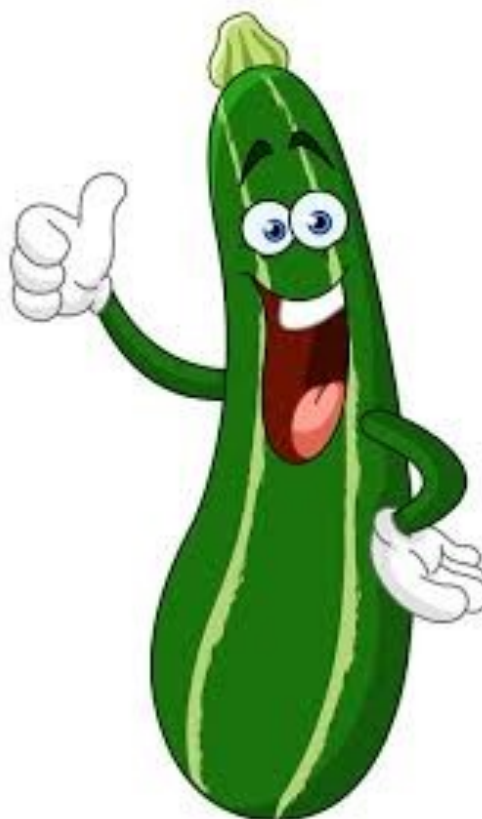
Vickie Minor, COMGA State Representative

If you have neighbors that are growing zucchini, ***beware!*** You never know what they'll do to dispose of their overgrown vegetables:

Published Nov. 7, 2017 at 11:18PM Bend Bulletin

Around the world

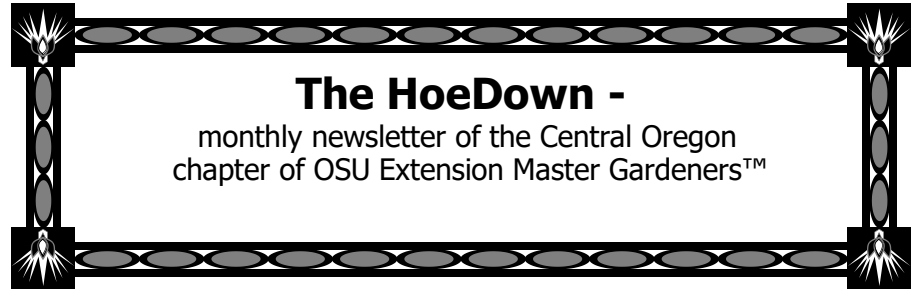
Fear squashed — A worried resident in Germany alerted police to what he thought was a World War II bomb in his garden. Officers rushed over — and found a particularly large zucchini. Police said in a statement that officers determined "the object, which really did look very like a bomb" was actually a nearly 16-inch, 11-pound zucchini which they believe someone threw into the garden. Unexploded wartime bombs are unearthed frequently during construction work in Germany, often forcing authorities to evacuate tens of thousands of residents while they are defused.



Central Oregon Chapter of OSU Extension Master Gardeners™
3893 SW Airport Way
Redmond, OR 97756



Crook
Deschutes &
Jefferson Counties



“Oregon State University Extension Service offers educational programs, activities, and materials without discrimination based on age, color, disability, gender identity or expression, genetic information, marital status, national origin, race, religion, sex, sexual orientation, or veteran’s status. Oregon State University Extension Service is an Equal Opportunity Employer.”

